



DISTRIBUIDOR OFICIAL



Portable And High Frequency X-Ray MSL PX15



- ✉ contacto@dfmed.cl
- 📍 Antonio Bellet 193 OF 302, Providencia.
- 🌐 WWW.DFLMED.CL

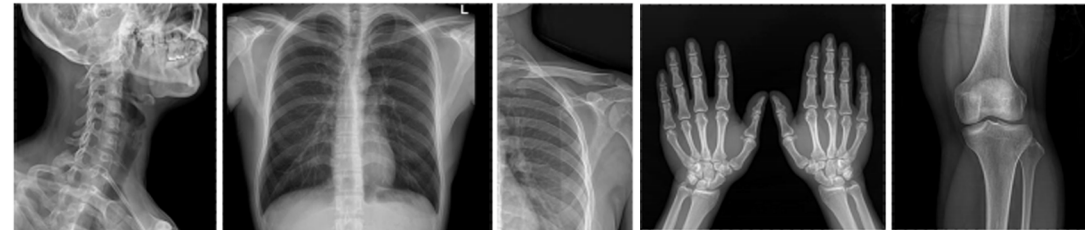
WWW.DFLMED.CL

Portable And High Frequency X-Ray

MSLPX15



GENERAL PARAMETER	
Output Power	5.3kW
Rated Voltage	220VAC ,±10%, 50/60Hz
Inverter Frequency	100kHz +/- 5%
kV accuracy	±4%
mA accuracy	≤±(5%) (mA>25mA,ms>5); ≤±(10% +1mA) (mA≤25mA);
Rotor	Fixed Rotor
EXPOSURE PARAMETER	
kV Range	40kV-125kV, 1kV step
mA Range	10-100mA (R'20)
ms Range	1 -4000ms (R'20)
ms accuracy	≤±(5% +0.2ms)
mAs Range	0.1-200mAs (R'20)
mAs accuracy	≤±(5%+0.2mAs)
OPTIONAL PARAMETER	
Tech. mode	kV-mAs
	kV-mA-ms
APR num	2000
Communication Interface	RS-232
Volume	450*255*220 (include collimator)
Weight	15kg





- ✉ contacto@dflmed.cl
- 📍 Antonio Bellet 193 OF 302, Providencia.
- 🌐 WWW.DFLMED.CL

