



DISTRIBUIDOR OFICIAL



Portable X-Ray

MSL GX11



- ✉ contacto@dflmed.cl
- 📍 Antonio Bellet 193 OF 302, Providencia.
- 🌐 WWW.DFLMED.CL

WWW.DFLMED.CL



Portable X-ray machine

MSLGX11



Applicable to hospitals | medical clinics | nursing homes

Introduction

Compact and convenient X-ray

MSLGX11 is a multifunctional portable X-ray machine, including a 5kW X-ray power supply device. Small size, light weight and high power density, It can fulfill various portable X-ray application scenarios.



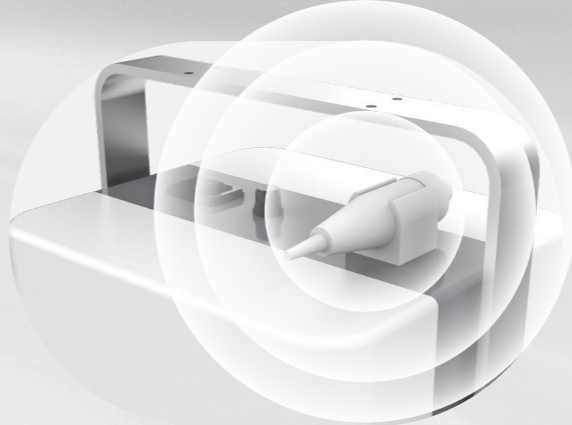
Product features



① Compact and portable, Easy to use



② Wireless controlled exposure



③ Wired manual exposure



④ Flexible operation, fast imaging



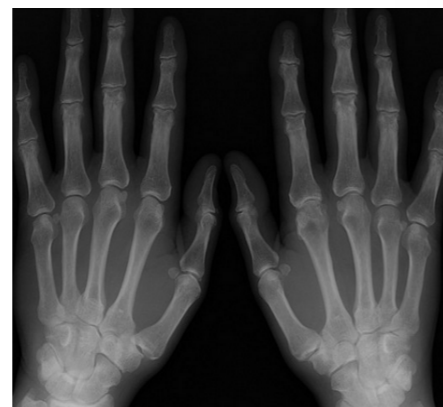
⑤ Bluetooth Support
Easy connection to computer



Application



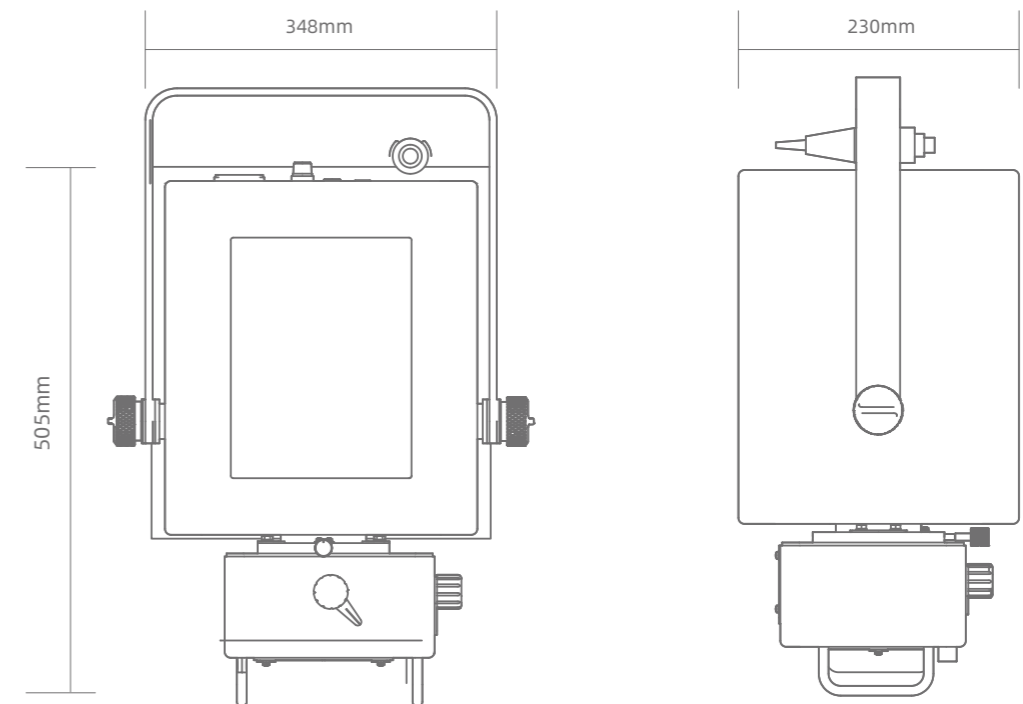
Clinical pictures



Specifications

Type	MSLGX11
System Requirements	
Electric source	AC 210~230V / AC 100V~120V
Power	5KW
Generator	
kV range	40~125 kV
mAs range	0.1~100mAs
mA range	10~100mA
Communication mode	RS232/Bluetooth
Exposure mode	Wired/Wireless
X-ray Tube	
Focal spots	0.6/1.8mm
Anode Angle	15°
Mechanics parameters	
Size	505 x 348 x 230mm
Weight	16kg

Dimension





- ✉ contacto@dflmed.cl
- 📍 Antonio Bellet 193 OF 302, Providencia.
- 🌐 WWW.DFLMED.CL

