



# DFL MED

EQUIPAMIENTO MÉDICO



DISTRIBUIDOR OFICIAL



## Portable X-Ray **Vet**

### MSL GX11



- ✉ contacto@dfmed.cl
- 📍 Antonio Bellet 193 OF 302, Providencia.
- 🌐 WWW.DFLMED.CL

WWW.DFLMED.CL



**Portable simple X-ray machine**

**MSLGX11 Vet**



[ Simple rack ]



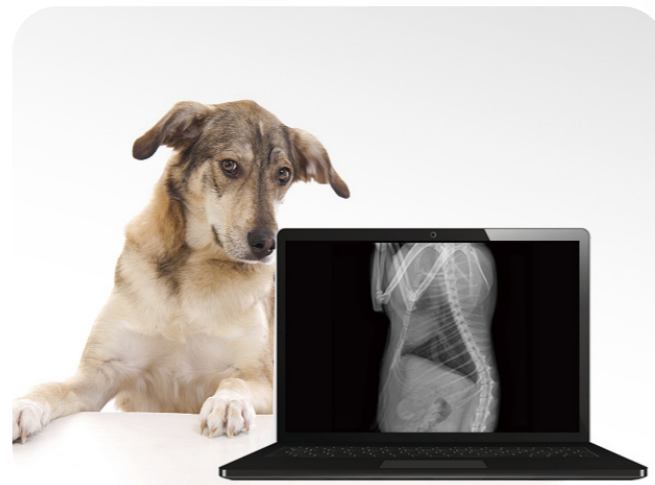
[ Flat rack ]

**Suitable for Horse Farms | Pasture | Pet clinic | Zoo | Institute**

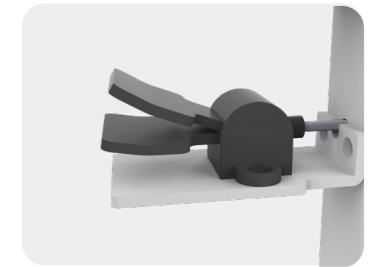
**Introduction**

**Portable simple X-ray machine**

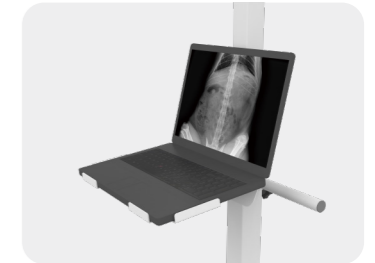
The mobile simple frame and mobile flat rack is a convenient and low-cost option to take pictures of the head, chest, abdomen, legs and other parts of the animal for quick and easy diagnostic purposes.



**Product features**



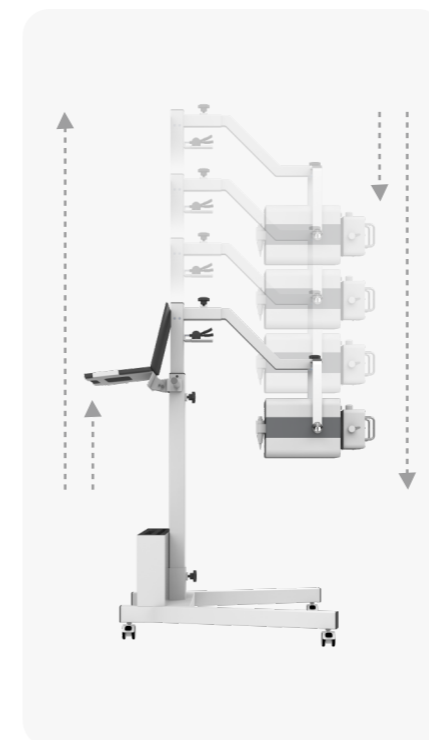
Unlock handle for easy lift



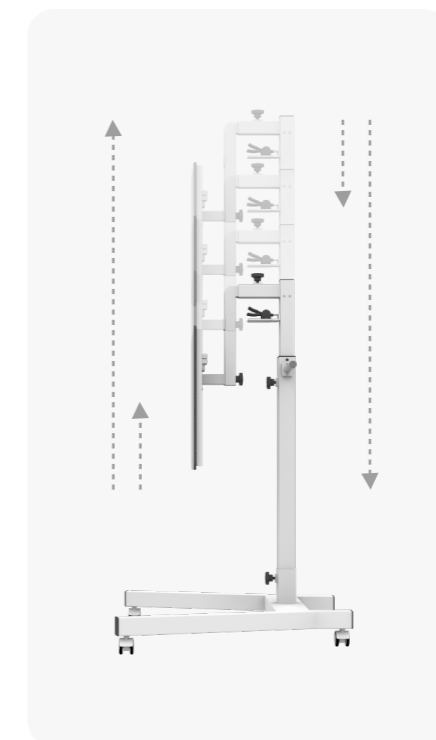
Convenient computer clinical picture display



The rear box of the frame can be equipped with tablet, computer and flash handbrake



Mobile simple frame up / down



Mobile Flat rack up / down

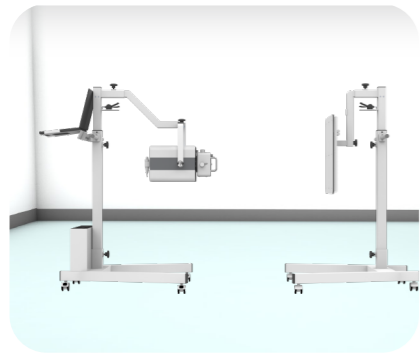


Simple rack flexible disassembly and change up and down position

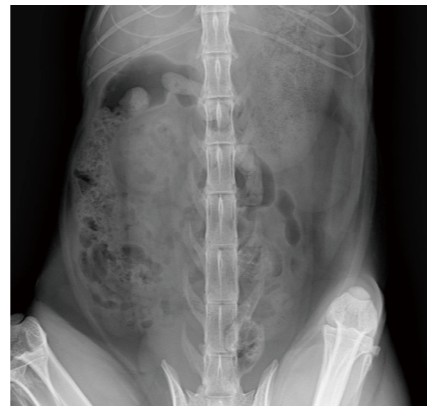
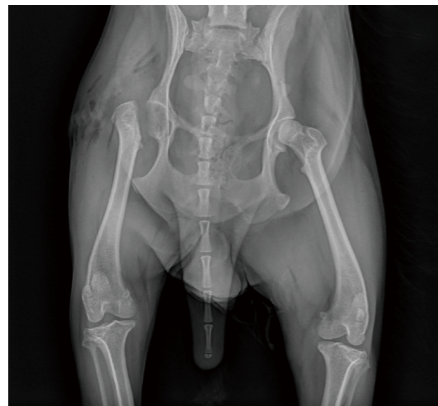


Detector up / down

## Application



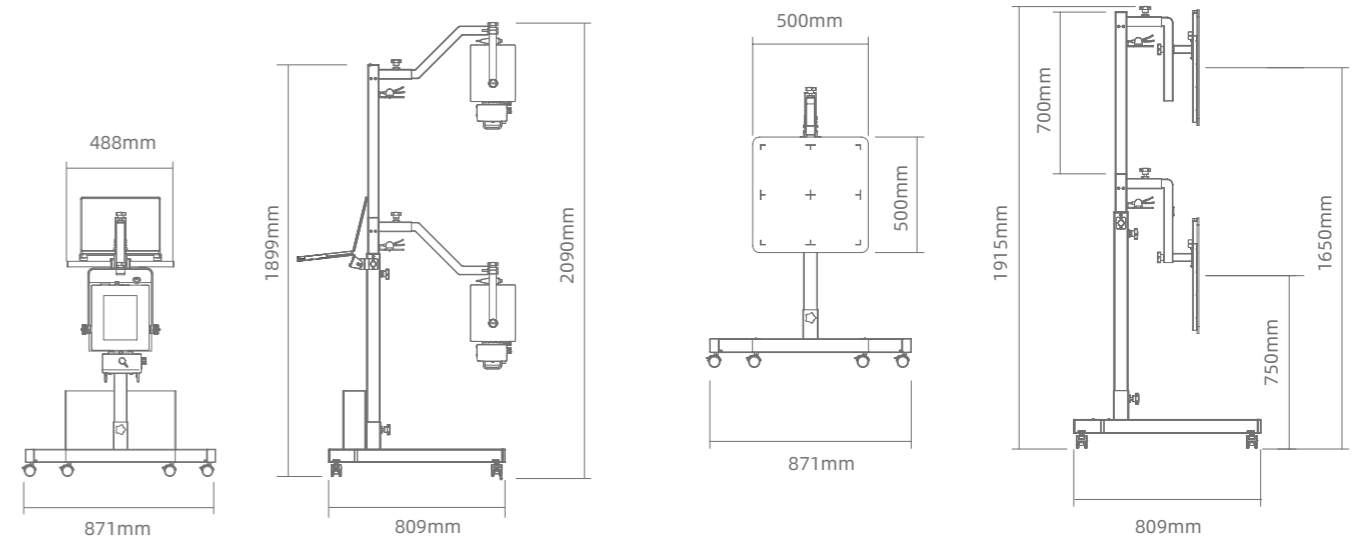
## Clinical pictures



## Specifications

Type	MSLGX11 Vet
<b>System Requirements</b>	
Electric source (V)	AC 210 - 230 / AC 100 -120
Power (KW)	5
<b>Generator</b>	
kV range (KVp)	40 -125
mAs range (mAs)	0.1-100
mA range (mA)	10 -100
Communication mode	RS232/Bluetooth
Exposure mode	Wired/Wireless
<b>X-ray Tube</b>	
Focal spots (mm)	0.6/1.8
Anode Angle (°)	15
<b>Mechanics parameters</b>	
Simple rack size (mm <sup>3</sup> )	871 x 809x 1899
Flat rack size (mm <sup>3</sup> )	871 x 809x1915

## Dimension





- ✉ [contacto@dflmed.cl](mailto:contacto@dflmed.cl)
- 📍 Antonio Bellet 193 OF 302, Providencia.
- 🌐 [WWW.DFLMED.CL](http://WWW.DFLMED.CL)

